

# RENZ®

BINDING AND LAMINATING SYSTEMS



**Renz DTP 340 M**  
Desktop Electric Punching Machine

## Renz MBS

Modular Punching  
and Binding System

### FEATURES

- Modules for inserting or closing wire comb, plastic comb and spiral binding can be attached
- Quick interchangeable units with a simple attachment system
- Simple and quick die changes in less than 1 minute
- Punching speeds up to 20.000 sheets/h\*
- Binding capacity with a MBS module is up to 400 blocks/h\*\*
- Compact and requires little space
- Well-proven technology „Made in Germany“

\* 70 / 80 gr. paper  
\*\* depends on product, logistics and operator

SEMI-PROFESSIONAL LINE

Gestaltung KPG Grafikdesign, Schwäbisch Gmünd, +49 (0) 7175 999120

## DTP 340 M WORKFLOW AND SPECIFICATIONS AT A GLANCE

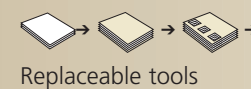
### DTP 340 M Technical Data

Length, width, height	36 cm, 49 cm, 25 cm [14", 2", 10"]
Weight	40 kg [88 lbs.]
Punching capacity	Up to 20,000 sheets/hour*
Formats	Punching width up to 34 cm [13,5"]
Punched thickness	35 sheets* per punching operation [depends on tool]
Punching pins can be deselected	Punching pins can be deselected for fastest possible change of format**
Variable margin clearance	For all tools
Tool change	In less than 1 minute
Punch alignment	Vertical
Power supply	230 V, 50 Hz / 250 W or 110 V, 60 Hz

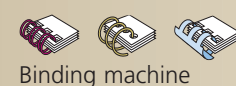
## MBS MODULAR BINDING SYSTEM

### WBS 340, CBS 340 and PBS 340 Technical Data

#### DTP 340 M



Replaceable tools

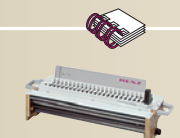


Binding machine

Punching and binding  
system DTP 340 M with  
MBS module



[ + ]



[ + ]



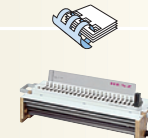
[ = ]



[ + ]



[ = ]



[ + ]



[ = ]



	WBS 340	CBS 340	PBS 340
Type of binding	Wire comb binding	Spiral binding	Plastic binding
Length, width, height	56 x 15 x 32 cm 22" x 6" x 13"	45 x 10 x 16 cm 18" x 4" x 6,3"	50 x 19 x 17cm 20" x 7,5" x 6,7"
Weight	8 kg [17,6 lbs.]	7,2 kg [15,8 lbs.]	4,3 kg [9,5 lbs.]
Max. operating width	340 mm [13,5"]	340 mm [13,5"]	340 mm [13,5"]
Max. binding thickness/ number of sheets	34 mm/340 sheets*	16 mm/160 sheets*	48 mm/450 sheets*
Ø binding elements	3/16"-1 1/2" [5.5-38 mm]		
Ø spirals		20 mm max. for plastic and metal spirals	
Ø plastic combs			6 - 52 mm
Motor		230 V 50 Hz or 110 V, 60 HZ	

\* 70/80 g/m<sup>2</sup> paper / 20 # stock    \*\* A4 [11"] and A5 [8,5"] punching pins only  
can be deselected with spiral die



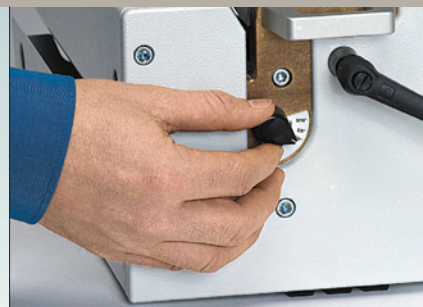
# DTP 340 M

**HIGH-PERFORMANCE PUNCHING SYSTEM** for punching and perforating paper with operating width of up to 34 cm [13,5"]. Convenient operation thanks to foot switch and vertical paper feed. Versatile thanks to replaceable tools.



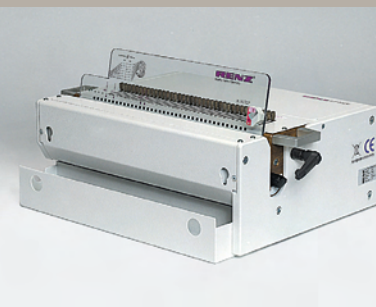
## Tool change

Simpler, faster tool changes in less than 1 minute, thanks to quick-release fastener.



## Setting the margin clearance

Rotary knob used to set the ideal perforating margin clearance [not in the case of tools with thumbhole].



## Chad compartment

Large chad compartment can be removed from the front or the side.



TO ALLOW OPTIMUM FORMAT ADJUSTMENT, all perforating tools are delivered with punching pins which can be deselected [in case of spiral binding, punching pins can only be deselected for A4/11" and A5/8,5" formats].

## REPLACEABLE PUNCHING TOOLS FOR ALL LOOSE-LEAF BINDING SYSTEMS

All dies are open ended and are suitable for punching up to 2 x 34 cm.

Type of perforation	Stamp size	Pitch	Max. punching thickness
<b>RENZ RING WIRE®</b> Round hole	Ø 4,0 mm	3:1	3,0 mm
	Ø 4,0 mm thumbhole	3:1	3,0 mm
	Ø 6,0 mm	2:1	3,0 mm
<b>RENZ RING WIRE®</b> Rectangular hole	4 x 4 mm	3:1	3,0 mm
	4 x 4 mm thumbhole	3:1	2,5 mm
	5,5 x 3,5 mm	2:1	3,5 mm
	6 x 6 mm	2:1	3,0 mm
<b>RENZ PLASTIC BINDING</b> Rectangular hole	7 x 3 mm	Europe 12 mm	3,5 mm
	8 x 3 mm	US 9/16" = 14,28 mm	3,5 mm
<b>RENZ SPIRAL BINDING</b> Round hole	Ø 3,6 mm	5 mm	2,5 mm
	Ø 4,0 mm	6 mm	2,5 mm
<b>RENZ SPIRAL BINDING</b> Oval hole	4 x 3,2 mm	5 mm	2,5 mm
	4,5 x 3,6 mm	6 mm	2,5 mm

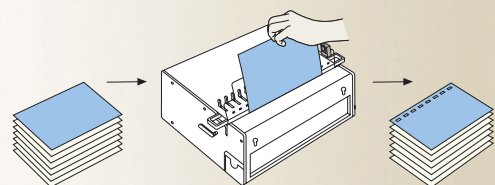


PLEASE UNFOLD

## WORKFLOW FOR MODULAR PUNCHING AND BINDING SYSTEMS



**PUNCHING**  
DTP 340 M punching and perforating machine



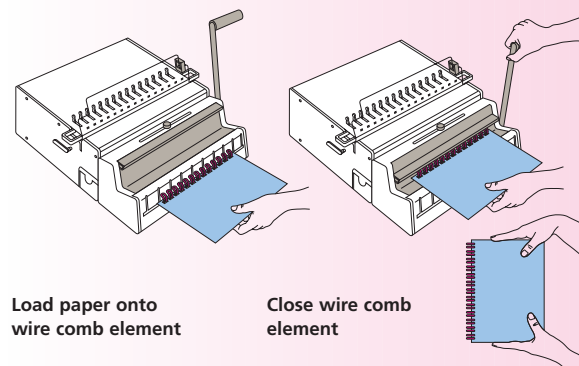
Paper to be punched

Effortless electric punching

Punched paper



**RENZ RING WIRE® WIRE COMB BINDING**  
DTP 340 M punching and perforating machine and WBS 340 module

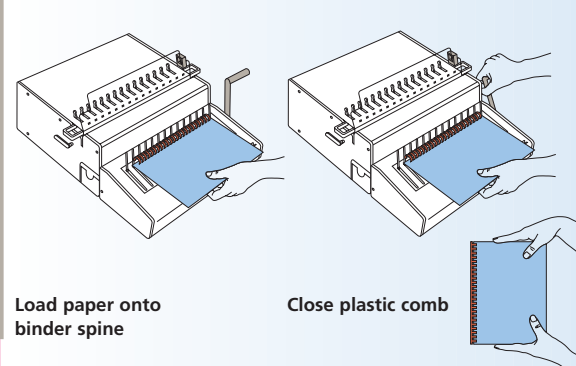


Load paper onto wire comb element

Close wire comb element



**RENZ PLASTIC COMB BINDING**  
DTP 340 M punching and perforating machine and PBS 340 module

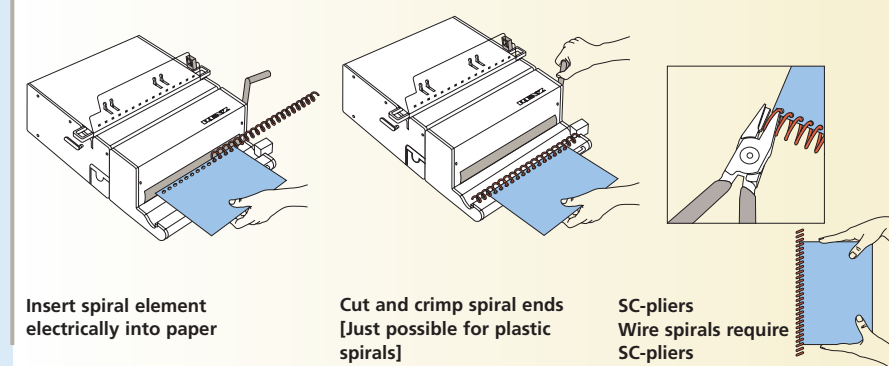


Load paper onto binder spine

Close plastic comb



**RENZ SPIRAL BINDING**  
DTP 340 M punching and perforating machine and CBS 340



Insert spiral element electrically into paper

Cut and crimp spiral ends [Just possible for plastic spirals]

SC-pliers  
Wire spirals require SC-pliers

# MBS

**MODULAR EXPANDABLE PUNCHING AND BINDING SYSTEM** for Renz Ring Wire® wire comb binding, spiral binding and plastic binding. All MBS modules can be attached to the DTP 340 M for a high-performance, compact punching and binding system or can be used on their own as a binding machine.



## MBS MODULES



## WBS 340 Manual closing machine

For closing RENZ RING WIRE® elements, from Ø 3/16" to 1 1/2" [5.5-38 mm], non-pitch dependent, max. operating width 340 mm [13,5"], can also be used as a standalone device [see module holder]. Open end WBS 340 module allows closing of 2 x 34 cm wire combs.



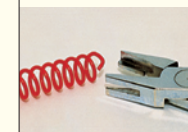
## CBS 340 Electric spiral inserting machine with integrated manual cutting and crimping unit

Electric spiral inserting for plastic and wire spirals up to ø 20 mm. Manual cutting and crimping of plastic spirals up to ø 20 mm, not possible for wire spirals. Wire spirals require the SC-pliers. Can be used as standalone unit. No module holding device required.



## PBS 340 manual binding machine for plastic comb binding

Manual binding machine for binding plastic binding spines from Ø 6 to 52 mm [1/4"-2"], operating width 340 mm [13,5"], can also be used as standalone device [see module holder], for US pitch 24 rings max., for European pitch, 28 rings max.



## MODULAR ASSEMBLY



Thanks to a simple attachment system, all MBS modules can be attached to the DTP 340 M just in seconds to produce an extremely compact punching and binding system.

## MODULE HOLDER



All modules can also be used as standalone devices - this requires a module holder. Not for CBS 340.

## ECL 360



For professional closing of RENZ RING WIRE® wire comb binding we also recommend our ECL 360 electric closing machine.